

mod.GMB

Getto multiplo
quadrante bagnato
Multi jet-wet dial



SU RICHIESTA
ON REQUEST



Mod. GMB

Getto multiplo, quadrante bagnato, lettura diretta. Realizzato nella versione per acqua fredda (30°C) nei calibri da \varnothing 15 a 50 mm (1/2" \div 2"). Particolarmente adatto per installazioni domestiche e industriali. Garanzia di lunga durata ed elevata precisione.

Mod. GMB

Vielfachwasserstrahl, nasses Ziffernblatt, Direktablesung. Produziert in der Version Kaltwasser (30°C) in den Durchmesser von 15 bis 50 mm (1/2 Zoll \div 2 Zoll). Besonders geeignet für Haus- und Industrieanlagen. Garantiert lange Haltbarkeit und erhöhte Genauigkeit.

Mod. GMB

Multi jet, wet dial, direct reading. Produced in the cold water version (30°C) in the diameters 15 to 50 mm (1/2" \div 2"). Particularly suitable for domestic and industrial installations. Long durability and elevated precision guaranteed.

Mod. GMB

Jet multiple, cadran noyé à lecture directe, disponible en la version pour eau froide (30°C) et dans les calibres de 15 à 50 mm (de 1/2" à 2"), particulièrement adapté à un usage domestique ou industriel, fiabilité dans le temps et précision élevée.

Mod. GMB

Chorro múltiple, esfera húmeda, lectura directa. Fabricado en la versiones para agua fría (30°C) en los calibres de \varnothing 15 a 50 mm (1/2" \div 2"). Particularmente adecuado para instalaciones domésticas y industriales. Garantía de larga duración y elevada precisión.

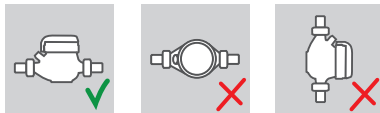
Мод. GMB

Многоструйный счетчик с мокрым квадрантом и прямым считыванием. Выпускается в версии для холодной (30°C) воды диаметрами условного прохода от 15 до 50 мм (1/2" – 2"). Пригоден для коммунального и промышленного применения. Гарантия долговечности и высокой точности.

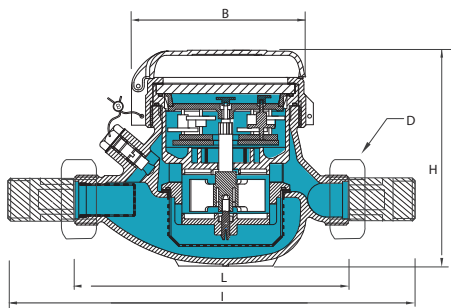
Caratteristiche tecniche - Technical features

| Calibro Size | DN | mm in | 15 (1/2") | 20 (3/4") | 25 (1") | 32 (1 1/4") | 40 (1 1/2") | 50 (2") |
|---|------------------|-------------------|-----------|-----------|---------|-------------|-------------|---------|
| Portata Max Max Flow Rate | Q_{max} | m ³ /h | 3 | 5 | 7 | 12 | 20 | 30 |
| Portata nominale Nominal Flow Rate | Q_n | m ³ /h | 1,5 | 2,5 | 3,5 | 6 | 10 | 15 |
| Portata di transizione Transitional flow rate | Q_t ±2% | l/h | 120 | 200 | 280 | 480 | 800 | 3000 |
| Portata minima Min flow rate | Q_{min} ±5% | l/h | 30 | 50 | 70 | 120 | 200 | 450 |
| Sensibilità Sensitivity | | l/h | 10 | 14 | 17 | 27 | 46 | 75 |
| Lettura minima Min reading | | l | 0,05 | 0,05 | 0,05 | 0,05 | 0,05 | 0,05 |
| Lettura massima Max reading | | m ³ | 99.999 | 99.999 | 99.999 | 99.999 | 999.999 | 999.999 |
| Pressione max ammissibile Max admissible pres. MAP | | bar | 16 | 16 | 16 | 16 | 16 | 16 |

Posizione d'installazione Installation position



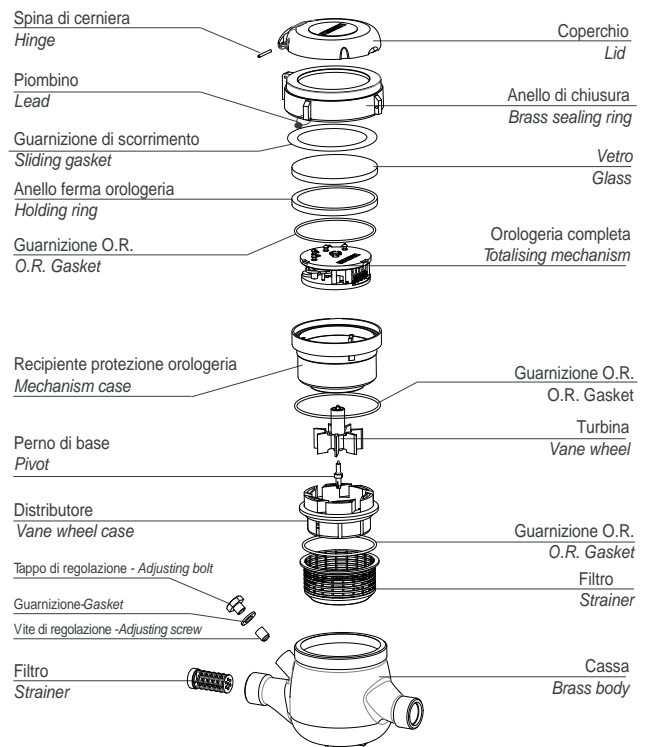
Dimensioni e pesi - Dimensions and Weights



| Calibro Size | mm in | 15 (1/2") | 20 (3/4") | 25 (1") | 32 (1 1/4") | 40 (1 1/2") | 50 (2") |
|--|-------|-------------|-----------|---------|-------------|-------------|---------|
| L | mm | 145-165-190 | 190 | 260 | 260 | 300 | 300 |
| l | mm | 225-245-270 | 290 | 360 | 380 | 440 | 460 |
| H | mm | 109 | 111 | 117 | 117 | 153 | 172 |
| B | mm | 100 | 100 | 104 | 104 | 126 | 160 |
| D <small>Filettatura Threading</small> | mm | 3/4" | 1" | 1 1/4" | 1 1/2" | 2" | 2 1/2" |
| Pesi Weight | kg | 1,35 | 1,45 | 2,04 | 2,11 | 4,58 | 7,25 |

Filettatura - Threading EN ISO 228-1:2000

I contatori DN 50 possono essere forniti flangiati secondo ISO 7005-2 / EN 1092-2 PN16
The DN50 meters can be supplied flanged according to ISO 7005-2 / EN 1092-2 PN16



Versione base - Basic version

- Classe B-H CEE75/33 ISO4064
- Disponibile nella sola versione per acqua fredda 0°C-30°C
- Trasmissione meccanica
- Lettura diretta su 5 rulli numeratori (6 rulli numeratori su DN40 e DN50)
- Quadrante bagnato
- Con coperchio

- Class B-H CEE75/33 ISO4064
- Available for cold water 0°C-30°C only
- Mechanical transmission
- Direct reading on 5 numeric rolls (6 numeric rolls on DN40 and DN50)
- Wet dial
- With lid

Su richiesta - Upon request

- MID R100-H 2004/22/CE